



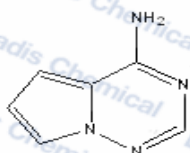
Current Data Parameters
NAME
EXPNO 10
PROCNO 1

F2 - Acquisition Parameters
Date_ 20200309
Time_ 13.26
INSTRUM spect
PROBHD 5 mm PABBO BB-
PULPROG zg30
TD 65536
SOLVENT DMSO
NS 16
DS 2
SWH 8012.820 Hz
FIDRES 0.122266 Hz
AQ 4.0894465 sec
RG 203
DW 62.400 usec
DE 6.50 usec
TE 474.9 K
D1 1.0000000 sec
TD0 1

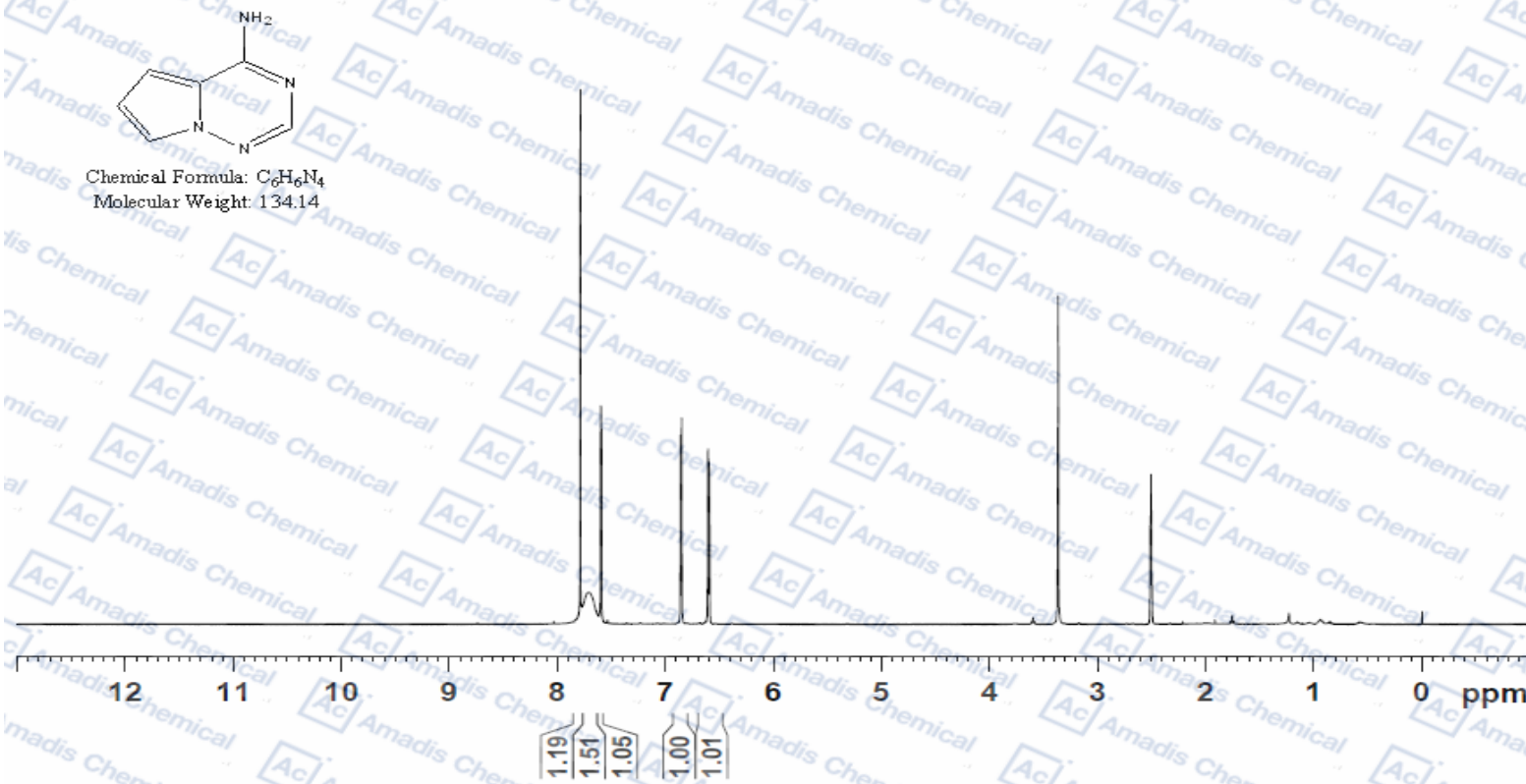
----- CHANNEL f1 -----
SF01 400.1324710 MHz
NUC1 1H
P1 14.00 usec
PLW1 20.0000000 W

F2 - Processing parameters
SI 65536
SF 400.1300000 MHz
WDW no
SSB 0
LB 0 Hz
GB 0
PC 1.00

7.789
7.711
7.604
7.600
7.597
7.593
6.864
6.860
6.853
6.849
6.611
6.604
6.600
6.593
3.366
2.516
2.511
2.507
2.502
2.498



Chemical Formula: C₆H₆N₄
Molecular Weight: 134.14



*For R&D use only