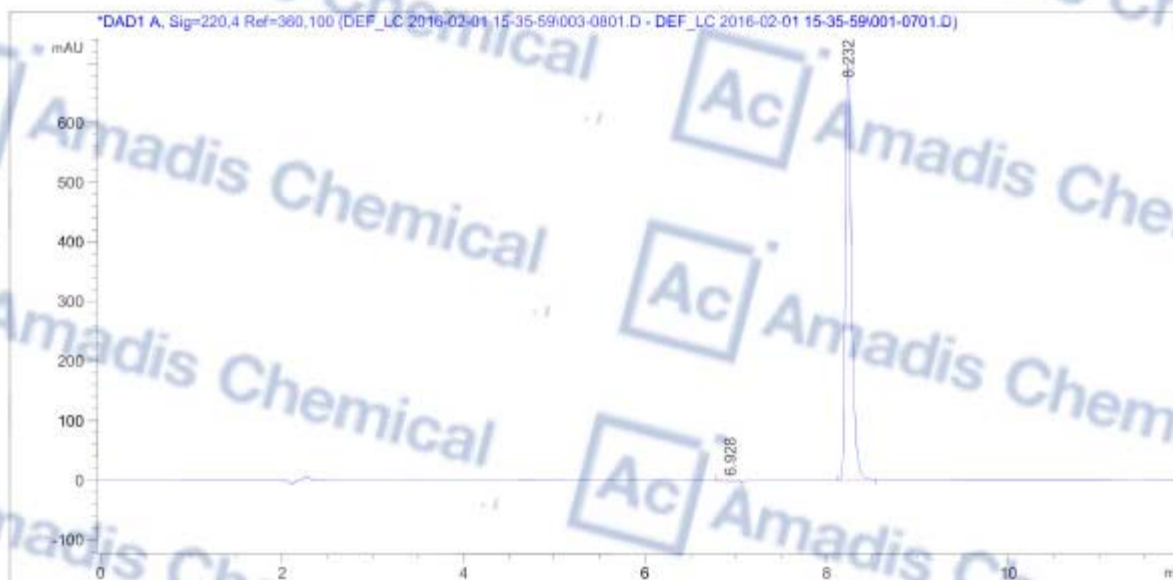


HPLC

inj volume : 1.0 µl
 Different Inj Volume from Sequence ! Actual Inj Volume : 0.1 µl
 Acq. Method : C:\CHEM32\1\DATA\DEF_LC 2016-02-01 15-35-59\LC-12MIN-ACID.M
 Last changed : 2/1/2016 10:31:38 AM by 2016-01
 Analysis Method : C:\CHEM32\1\METHODS\LC-12MIN-ACID.M
 Last changed : 2/1/2016 4:51:53 PM by 2016-01
 (modified after loading)
 Method Info : column: XBRIDGE C8 3.5µm
 mobile phase: water(0.05%tfa):ACN,2min-10min 10%-100%



=====
 Area Percent Report
 =====

Sorted By : Signal
 Multiplier: : 1.0000
 Dilution: : 1.0000
 Use Multiplier & Dilution Factor with ISTDs

Signal 1: DAD1 A, Sig=220,4 Ref=360,100
 Signal has been modified after loading from rawdata file!

Sample Name: qinuo

Peak #	RetTime [min]	Type	Width [min]	Area [mAU*s]	Height [mAU]	Area %
1	6.928	BV	0.1748	22.43062	1.56912	0.6751
2	8.232	BB	0.0706	3300.18579	705.70404	99.3249
Totals :				3322.61641	707.27316	

* If you have any comments and suggestions, please contact us by sales@amadischem.com