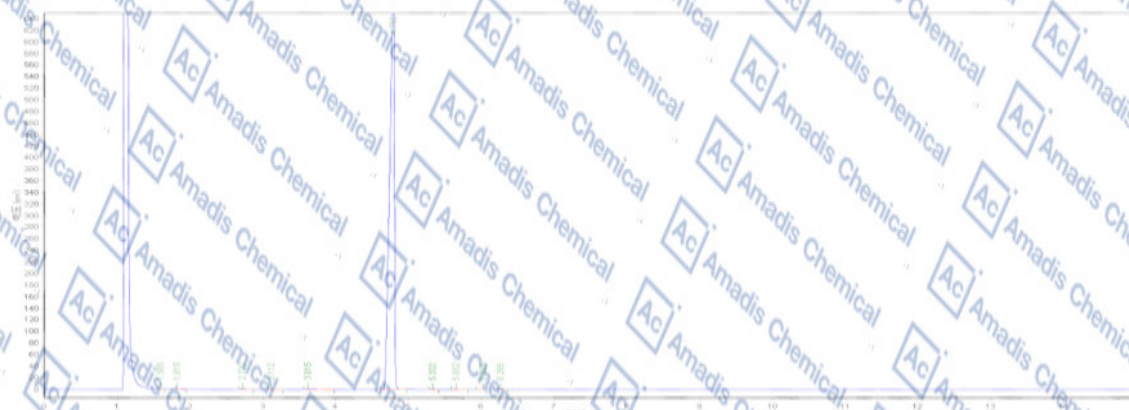


GC of 773874-16-1

Analytical Instrument: 2000-11GC

Analytical Condition: SE-54 30m×0.33mm×0.33um, Carrier: N₂ 1ml/min, Column Temp. 100°C/2min-20°C/min-280°C/15min, Inj. Temp. 290°C, Det. Temp. 270°C



Peak	Type	Ret Time	Height	Area	Content (%)
1		1.585	938.200	1350.700	0.0429
2		1.815	1339.933	3195.000	0.1014
3		2.722	2277.368	4929.500	0.1563
4		3.112	435.967	1108.100	0.0352
5		3.615	1630.871	11220.700	0.3561
6		4.790	719352.938	3123618.000	99.1277
7		5.332	454.200	1536.700	0.0488
8		5.652	297.882	1642.000	0.0521
9		6.025	296.800	738.300	0.0234
10		6.265	649.100	1770.000	0.0560
					100.0000

* If you have any comments and suggestions, please contact us by sales@amadischem.com